

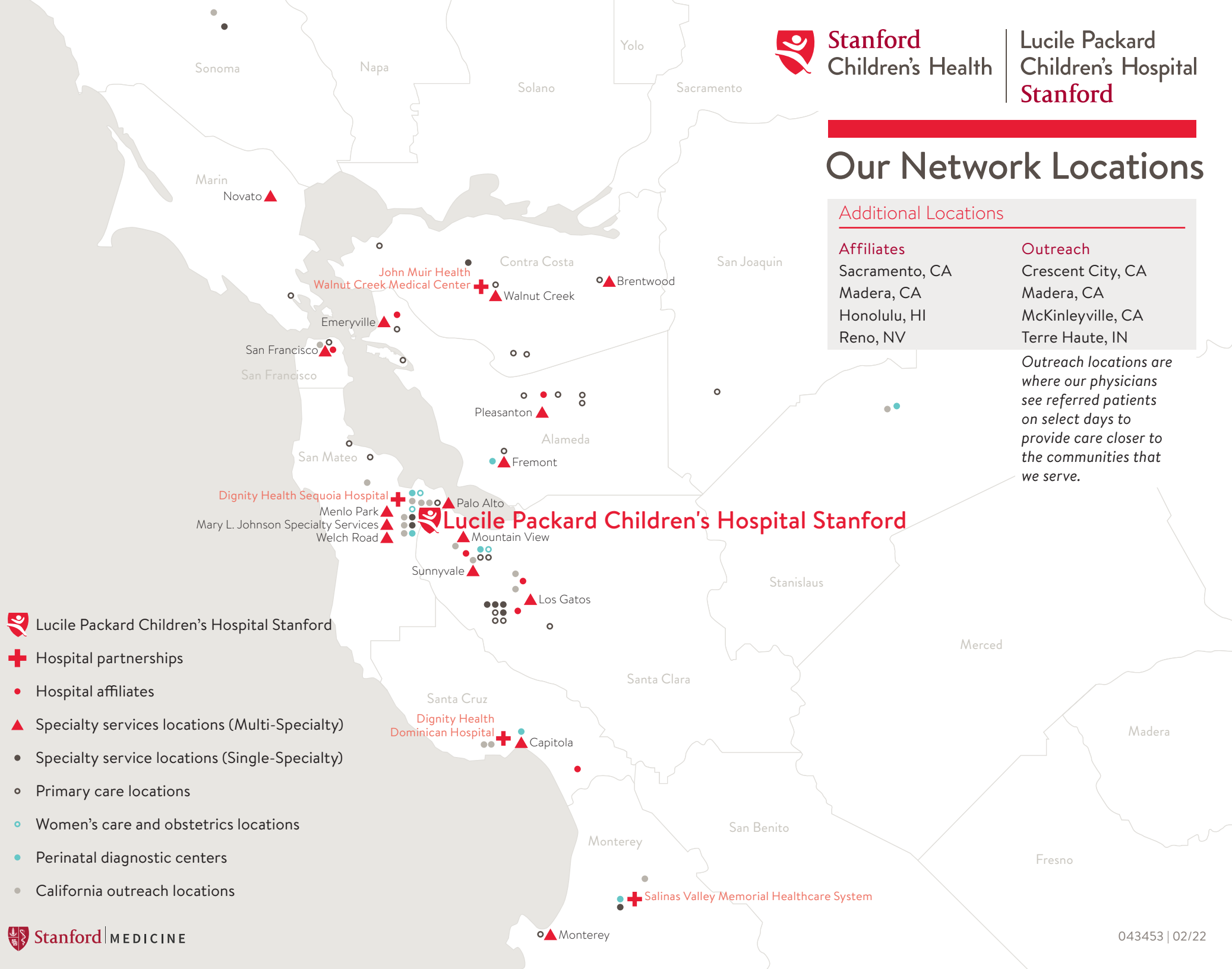


# Our Network Locations

Additional Locations

Affiliates	Outreach
Sacramento, CA	Crescent City, CA
Madera, CA	Madera, CA
Honolulu, HI	McKinleyville, CA
Reno, NV	Terre Haute, IN

*Outreach locations are where our physicians see referred patients on select days to provide care closer to the communities that we serve.*



Lucile Packard Children's Hospital Stanford

Hospital partnerships

Hospital affiliates

Specialty services locations (Multi-Specialty)

Specialty service locations (Single-Specialty)

Primary care locations

Women's care and obstetrics locations

Perinatal diagnostic centers

California outreach locations

# Lucile Packard Children's Hospital Stanford

PALO ALTO Lucile Packard Children's Hospital Stanford . . . . . 725 WELCH RD

## Multi-specialty center locations ▲

BRENTWOOD	Specialty Services – Brentwood	. . . . . 2400 BALFOUR RD
CAPITOLA	Specialty Services – Capitola	. . . . . 824 BAY AVE
EMERYVILLE	Specialty Services – Emeryville	. . . . . 6121 HOLLIS ST
FREMONT	Specialty Services – Fremont	. . . . . 2299 MOWRY AVE
LOS GATOS	Specialty Services – Los Gatos	. . . . . 14601 S BASCOM AVE
MENLO PARK	Specialty Services – Menlo Park	. . . . . 321 MIDDLEFIELD RD
MONTEREY	Specialty Services – Monterey	. . . . . 1900 GARDEN RD
MOUNTAIN VIEW	Specialty Services – Mountain View	. . . . . 1174 CASTRO ST
NOVATO	Specialty Services – Novato	. . . . . 101 ROWLAND WAY
PALO ALTO	Children's Services Watson Ct – Palo Alto	. . . . . 2452 WATSON CT
PALO ALTO	Mary L. Johnson Specialty Services	. . . . . 730 WELCH RD
PALO ALTO	Specialty Services – Welch Road	. . . . . 770 WELCH RD
PLEASANTON	Orthopedics – Pleasanton	. . . . . 5000 PLEASANTON AVE
SAN FRANCISCO	Specialty Services – San Francisco	. . . . . 1100 VAN NESS AVE
SUNNYVALE	Specialty Services – Sunnyvale	. . . . . 1195 W FREMONT AVE
WALNUT CREEK	Specialty Services – Walnut Creek	. . . . . 106 LA CASA VIA

## Single-specialty locations ●

LOS GATOS	Audiology – Los Gatos	. . . . . 14651 S BASCOM AVE
LOS GATOS	Los Gatos Orthopedic Clinic	. . . . . 555 KNOWLES DR
LOS GATOS	Pediatric Cardiology Associates – Los Gatos	. . . . . 14651 S BASCOM AVE
LOS GATOS	Pediatric Gastroenterology – Los Gatos	. . . . . 14777 LOS GATOS BLVD
PALO ALTO	Child and Adolescent Mental Health	. . . . . 401 QUARRY RD
PALO ALTO	Outpatient MRI Center	. . . . . 732 WELCH RD
PLEASANT HILL	Diablo Valley Child Neurology	. . . . . 400 TAYLOR BLVD
SALINAS	Pediatric Cardiology Associates – Salinas	. . . . . 258 SAN JOSE ST
SANTA ROSA	SF/North Bay Pediatric Cardiology Practice	. . . . . 990 SONOMA AVE

## Primary care locations ○

ALAMEDA	Bayside Medical Group – Alameda	. . . . . 1359 PARK AVE
BERKELEY	Bayside Medical Group – Berkeley	. . . . . 2915 TELEGRAPH AVE
BRENTWOOD	Bayside Medical Group – Brentwood	. . . . . 100 CORTONA WAY
BURLINGAME	Peninsula Pediatric Medical Group – Burlingame	. . . . . 1720 EL CAMINO REAL
FREMONT	Bayside Medical Group – Fremont	. . . . . 2299 MOWRY AVE
LIVERMORE	Bayside Medical Group – Livermore	. . . . . 1134 MURRIETA BLVD
LIVERMORE	Livermore Pleasanton San Ramon Pediatrics – Livermore	. . . . . 1133 E STANLEY BLVD
LOS ALTOS	Altos Pediatric Associates	. . . . . 842 ALTOS OAKS DR
LOS GATOS	South Bascom Pediatrics	. . . . . 15899 LOS GATOS ALMADEN RD
MENLO PARK	Peninsula Pediatric Medical Group – Menlo Park	. . . . . 103 GILBERT AVE
MILL VALLEY	Town and Country Pediatrics – Mill Valley	. . . . . 61 CAMINO ALTO

 Please recycle.

MONTEREY	Pediatric Group of Monterey	. . . . . 1900 GARDEN RD
MOUNTAIN VIEW	Pediatrics – Mountain View	. . . . . 2204 GRANT RD
PINOLE	Bayside Medical Group – Pinole	. . . . . 2160 APPIAN WAY
PLEASANTON	Bayside Medical Group – Pleasanton	. . . . . 5720 STONERIDGE MALL RD
PLEASANTON	Livermore Pleasanton San Ramon Pediatrics – Pleasanton	. . . . . 5575 W LAS POSITAS BLVD
SAN FRANCISCO	Town and Country Pediatrics – San Francisco	. . . . . 2100 WEBSTER ST
SAN JOSE	Pediatric Associates – Camden Ave	. . . . . 6475 CAMDEN AVE
SAN JOSE	Pediatric Associates – Samaritan Dr	. . . . . 2577 SAMARITAN DR
SAN JOSE	Silicon Valley Pediatricians	. . . . . 2505 SAMARITAN DR
SAN MATEO	Peninsula Pediatric Medical Group – San Mateo	. . . . . 50 S SAN MATEO DR
SAN RAMON	Bayside Medical Group – San Ramon	. . . . . 5601 NORRIS CANYON RD
SAN RAMON	Livermore Pleasanton San Ramon Pediatrics – San Ramon	. . . . . 11030 BOLLINGER CANYON RD
TRACY	Bayside Medical Group – Tracy	. . . . . 4598 S TRACY BLVD
WALNUT CREEK	Bayside Medical Group – Walnut Creek	. . . . . 1776 YGNACIO VALLEY RD

## Perinatal diagnostic centers ●

FREMONT	Perinatal Diagnostic Center – Fremont	. . . . . 2147 MOWRY AVE
MODESTO	Perinatal Diagnostic Center – Modesto	. . . . . 1401 SPANOS CT
MOUNTAIN VIEW	Perinatal Diagnostic Center – Mountain View	. . . . . 2495 HOSPITAL DR
PALO ALTO	Perinatal Diagnostic Center – Palo Alto	. . . . . 725 WELCH RD
REDWOOD CITY	Perinatal Diagnostic Center – Redwood City	. . . . . 2900 WHIPPLE AVE
SALINAS	Perinatal Diagnostic Center – Salinas	. . . . . 212 SAN JOSE ST
SANTA CRUZ	Perinatal Diagnostic Center – Santa Cruz	. . . . . 1685 COMMERCIAL WAY

## Women's care and obstetric locations ○

MOUNTAIN VIEW	Altos Oaks Medical Group	. . . . . 2495 HOSPITAL DR
PALO ALTO	Women's Health – Palo Alto	. . . . . 211 QUARRY RD
REDWOOD CITY	Women's Care Medical Group	. . . . . 2900 WHIPPLE AVE

## Hospital partnerships +

REDWOOD CITY	Dignity Health Sequoia Hospital	. . . . . 170 ALAMEDA DE LAS PULGAS
SALINAS	Salinas Valley Memorial Healthcare System	. . . . . 450 E ROMIE LN
SANTA CRUZ	Dignity Health Dominican Hospital	. . . . . 1555 SOQUEL DR
WALNUT CREEK	John Muir Health Walnut Creek Medical Center	. . . . . 1601 YGNACIO VALLEY RD

## Hospital affiliates ●

## California outreach locations ●

# Our Network Locations

