

# Stanford Medicine Children's Health Referral Directory



We are pleased to present the *Stanford Medicine Children's Health Referral Directory*, designed to provide the latest information about our physicians, office locations, clinical services, and programs available for you and your patients.



**Physician Relations Services**  
PhysicianRelations@stanfordchildrens.org  
(650) 724-9606



As a referring provider, you are a critical part of the care team. We look forward to connecting with you. Please use one of the resources below for more information, based on the nature of your inquiry.

## All Other Outpatient Referrals

- Electronically, go to [mdportal.stanfordchildrens.org](https://mdportal.stanfordchildrens.org).
- Call the Referral Center at (800) 995-5724.
- Fax to (650) 721-2884.

## For Urgent Referral Triage

Call our MD-to-MD Consult Line: (800) 995-5724.

**Referral forms can be found at:**

<https://www.stanfordchildrens.org/en/refer/forms>



# Alphabetical Listing of Referral Numbers

**SBP** | South Bay / Peninsula   **SFNB** | San Francisco / North Bay   **EB** | East Bay   **CC** | Central Coast   **CV** | Central Valley

	PHONE	FAX
<b>Adolescent Medicine</b>		
<b>SBP</b>	(800) 995-5724	(650) 721-2884
<b>Allergy / Immunology</b>		
<b>SBP</b>	(800) 995-5724	(650) 721-2884
<b>SFNB</b>	(844) 733-2762	(650) 725-7578
<b>Audiology</b>		
<b>SBP</b>	(800) 995-5724	(650) 721-2884
<b>Biofeedback</b>		
<b>SFNB</b>	(844) 733-2762	(650) 725-7578
<b>Cardiology</b>		
<i>Palo Alto</i>	(800) 995-5724	(650) 721-2884
<i>South Bay / Los Gatos</i>	(408) 448-2817	(408) 448-4807
<b>SFNB</b>	(844) 733-2762	(650) 725-7578
<b>EB</b>	(925) 295-1701	(925) 295-1704
<b>CC</b>	(831) 757-7722	(831) 757-7733
<b>Complex Primary Care Clinic</b>		
<b>SBP</b>	(800) 995-5724	(650) 721-2884
<b>Dermatology</b>		
<b>SBP</b>	(800) 995-5724	(650) 721-2884
<b>EB</b>	(925) 263-5794	(925) 263-5795
<b>Development and Behavior</b>		
<b>SBP</b>	(800) 995-5724	(650) 721-2884
<b>CC</b>	(800) 995-5724	(650) 721-2884
<b>EB</b>	(925) 263-5794	(925) 263-5795
<b>Eating Disorders</b>		
<b>SBP</b>	(650) 723-5511	(650) 497-4246

	PHONE	FAX
<b>Endocrinology / Diabetes</b>		
<b>SBP</b>	(800) 995-5724	(650) 721-2884
<b>CC</b>	(800) 995-5724	(650) 721-2884
<b>SFNB</b>	(844) 733-2762	(650) 725-7578
<b>EB</b>	(925) 263-5794	(925) 263-5795
<b>Gastroenterology, Hepatology and Nutrition</b>		
<i>South Bay / Palo Alto / Capitola</i>	(800) 995-5724	(650) 721-2884
<i>Specialty Services - Los Gatos</i>	(800) 995-5724	(650) 721-2884
<i>Pediatric Gastroenterology - Los Gatos</i>	(408) 358-3573	(408) 356-2888
<b>SFNB</b>	(844) 733-2762	(650) 725-7578
<b>EB</b>	(925) 263-5794	(925) 263-5795
<i>Monterey</i>	(831) 375-1000	(831) 655-1548
<b>General Surgery</b>		
<b>SBP</b>	(800) 995-5724	(650) 721-2884
<b>SFNB</b>	(844) 733-2762	(650) 725-7578
<b>EB</b>	(925) 263-5794	(925) 263-5795
<b>Genetics</b>		
<b>SBP</b>	(800) 995-5724	(650) 721-2884
<b>SFNB</b>	(844) 733-2762	(650) 725-7578
<b>EB</b>	(925) 263-5794	(925) 263-5795
<b>Gynecology</b>		
<b>SBP</b>	(800) 995-5724	(650) 721-2884
<b>Hand</b>		
<b>SBP</b>	(844) 416-7846	(650) 721-2884
<b>EB</b>	(844) 416-7846	(925) 263-5795
<b>Heart Transplant</b>		
<b>SBP</b>	(800) 995-5724	(650) 721-2884

# Alphabetical Listing of Referral Numbers

**SBP** | South Bay/Peninsula   **SFNB** | San Francisco/North Bay   **EB** | East Bay   **CC** | Central Coast   **CV** | Central Valley

	PHONE	FAX
<b>Hematology</b>		
<b>SBP</b>	(800) 995-5724	(650) 721-2884
<b>CC</b>	(800) 995-5724	(650) 721-2884
<b>SFNB</b>	(844) 733-2762	(650) 725-7578
<b>EB</b>	(925) 941-4144	(925) 947-3208
<b>Immune Behavioral Health (PANS)</b>		
<b>SBP</b>	(800) 995-5724	(650) 721-2884
<b>Infectious Disease</b>		
<b>SBP</b>	(800) 995-5724	(650) 721-2884
<b>SFNB</b>	(844) 733-2762	(650) 725-7578
<b>EB</b>	(925) 263-5794	(925) 263-5795
<b>Intestinal Transplant</b>		
<b>SBP</b>	(650) 725-8771	(650) 736-7857
<b>Kidney Transplant</b>		
<b>SBP</b>	(650) 724-8236	(650) 723-4312
<b>Liver Transplant</b>		
<b>SBP</b>	(650) 725-8771	(650) 736-7857
<b>Lung and Heart-Lung Transplant</b>		
<b>SBP</b>	(650) 498-2568	(650) 723-4312
<b>Motion and Sports Performance Lab</b>		
<b>SBP</b>	(800) 995-5724	(650) 721-2884
<b>Nephrology</b>		
<b>SBP</b>	(800) 995-5724	(650) 721-2884
<b>SFNB</b>	(844) 733-2762	(650) 725-7578
<b>EB</b>	(925) 263-5794	(925) 263-5795
<b>Neurology</b>		
<b>SBP</b>	(800) 995-5724	(650) 721-2884
<b>CC</b>	(800) 995-5724	(650) 721-2884
<b>SFNB</b>	(844) 733-2762	(650) 725-7578
<b>EB</b>	(925) 263-5794	(925) 263-5795

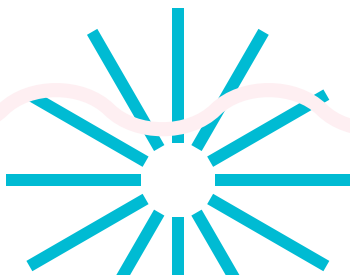
	PHONE	FAX
<b>Neuro-Oncology</b>		
<b>SBP</b>	(800) 995-5724	(650) 721-2884
<b>Neurosurgery</b>		
<b>SBP</b>	(800) 995-5724	(650) 721-2884
<b>SFNB</b>	(844) 733-2762	(650) 725-7578
<b>EB</b>	(925) 263-5794	(925) 263-5795
<b>Nutrition</b>		
<b>SBP</b>	(800) 995-5724	(650) 721-2884
<b>Obstetrics</b>		
<i>Welch Road, Palo Alto</i>	(800) 995-5724	(650) 725-2062
<i>Quarry Road, Palo Alto</i>	(650) 721-6060	(650) 366-6070
<i>Mountain View</i>	(650) 988-7470	(650) 725-7253
<i>Redwood City</i>	(650) 366-5594	(650) 366-6352
<b>Oncology</b>		
<b>SBP</b>	(800) 995-5724	(650) 721-1086
<b>SFNB</b>	(844) 733-2762	(650) 725-7578
<b>EB</b>	(925) 941-4144	(925) 947-3208
<b>Ophthalmology</b>		
<b>SBP</b>	(800) 995-5724	(650) 721-2884
<b>Orthopedics</b>		
<b>SBP</b>	(844) 416-7846	(650) 721-2884
<b>SFNB</b>	(844) 733-2762	(650) 725-7578
<b>EB</b>	(844) 416-7846	(925) 263-5795
<b>Otolaryngology (ENT)</b>		
<b>SBP</b>	(800) 995-5724	(650) 721-2884
<b>EB</b>	(925) 263-5794	(925) 263-5795

# Alphabetical Listing of Referral Numbers

**SBP** | South Bay/Peninsula   **SFNB** | San Francisco/North Bay   **EB** | East Bay   **CC** | Central Coast   **CV** | Central Valley

	PHONE	FAX
<b>Pain Management</b>		
<b>SBP</b>	(800) 995-5724	(650) 721-2884
<b>EB</b>	(800) 995-5724	(650) 721-2884
<b>Perinatal Diagnostics Center</b>		
<i>Fremont</i>	(800) 995-5724	(510) 713-9997
<i>Modesto</i>	(800) 995-5724	(209) 672-6378
<i>Mountain View</i>	(650) 988-7930	(650) 988-7859
<i>Palo Alto</i>	(800) 995-5724	(650) 725-9877
<i>Redwood City</i>	(800) 995-5724	(650) 381-3488
<i>Salinas</i>	(800) 995-5724	(831) 440-3432
<i>Santa Cruz</i>	(800) 995-5724	(831) 464-9996
<b>Plastic Surgery</b>		
<b>SBP</b>	(800) 995-5724	(650) 721-2884
<b>SFNB</b>	(844) 733-2762	(650) 725-7578
<b>Psychiatry</b>		
<b>SBP Referral</b>	(650) 723-5511	(650) 724-7389
<b>SBP Consult</b>	(800) 995-5724	
<b>Pulmonary</b>		
<b>SBP</b>	(844) 724-4140	(650) 721-2884
<b>CC</b>	(844) 724-4140	(650) 721-2884
<b>SFNB</b>	(844) 724-4140	(650) 725-7578
<b>EB</b>	(844) 724-4140	(925) 263-5795

	PHONE	FAX
<b>Rehabilitation Services</b>		
<b>Occupational Therapy</b>		
<b>SBP</b>	(800) 995-5724	(650) 721-2884
<b>Rehabilitation Services</b>		
<b>Physical Therapy</b>		
<b>SBP</b>	(800) 995-5724	(650) 721-2884
<b>EB</b>	(888) 897-3422	(650) 736-3406
<b>Rehabilitation Services</b>		
<b>Speech-Language Pathology</b>		
<b>SBP</b>	(800) 995-5724	(650) 721-2884
<b>Rheumatology</b>		
<b>SBP</b>	(800) 995-5724	(650) 721-2884
<b>SFNB</b>	(844) 733-2762	(650) 725-7578
<b>CC</b>	(800) 995-5724	(650) 721-2884
<b>EB</b>	(925) 263-5794	(925) 263-5795
<b>Sleep Center</b>		
<b>SBP</b>	(800) 995-5724	(650) 721-2884
<b>Urology</b>		
<b>SBP</b>	(800) 995-5724	(650) 721-2884
<b>CC</b>	(800) 995-5724	(650) 721-2884
<b>SFNB</b>	(844) 733-2762	(650) 725-7578
<b>EB</b>	(925) 263-5794	(925) 263-5795
<b>Weight Clinic</b>		
<b>SBP</b>	(800) 995-5724	(650) 721-2882





# Network Locations

**SBP** | South Bay/Peninsula   **SFNB** | San Francisco/North Bay   **EB** | East Bay   **CC** | Central Coast   **CV** | Central Valley

## Brentwood | **EB**

Stanford Medicine Children's Health  
Specialty Services – Brentwood  
2400 Balfour Rd, Ste 230  
Brentwood, CA 94513

## Capitola | **CC**

Stanford Medicine Children's Health  
Specialty Services – Capitola  
824 Bay Ave, Ste 70  
Capitola, CA 95010

## Emeryville | **EB**

Stanford Medicine Children's Health  
Specialty Services – Emeryville  
6121 Hollis St, Ste 2  
Emeryville, CA 94608

## Fremont | **EB**

Stanford Medicine Children's Health  
Specialty Services – Fremont  
2299 Mowry Ave, Ste 2A  
Fremont, CA 94538

## Livermore | **EB**

Stanford Medicine Children's Health  
Specialty Services – Livermore  
1134 Murrieta Blvd,  
Livermore CA 04550

## Los Gatos | **SBP**

Audiology – Los Gatos  
14651 S Bascom Ave, Ste 112  
Los Gatos, CA 95032

Pediatric Cardiology Associates –  
Los Gatos  
14651 S Bascom Ave, Ste 112  
Los Gatos, CA 95032

Rehabilitation Services – Los Gatos  
555 Knowles Dr, Ste 207  
Los Gatos, CA 95032

Stanford Medicine Children's Health  
Specialty Services – Los Gatos  
14601 S Bascom Ave, Ste 200  
Los Gatos, CA 95032

## Menlo Park | **SBP**

Stanford Medicine Children's Health  
Specialty Services – Menlo Park  
321 Middlefield Rd  
Menlo Park, CA 94025

## Monterey | **CC**

Stanford Medicine Children's Health  
Specialty Services – Monterey  
1900 Garden Rd, Ste 130  
Monterey, CA 93940

## Mountain View | **SBP**

Specialty Services – Mountain View  
1174 Castro St, Ste 250  
Mountain View, CA 94040

## Novato | **SFNB**

Stanford Medicine Children's Health  
Specialty Services – Novato  
101 Rowland Way, Ste 220  
Novato, CA 94945

## Palo Alto | **SBP**

Child and Adolescent Mental Health  
401 Quarry Rd  
Palo Alto, CA 94305  
  
Children's Services – Watson Court  
2452 Watson Ct  
Palo Alto, CA 94303

Mary L. Johnson Specialty Services  
730 Welch Rd  
Palo Alto, CA 94304

Outpatient MRI Center  
732 Welch Rd  
Palo Alto, CA 94304

Stanford Medicine Children's Health  
Specialty Services – Welch Rd  
770 Welch Rd  
Palo Alto, CA 94304

## Pleasant Hill | **EB**

Children's Orthopedic and Sports  
Medicine Center – Pleasant Hill  
3480 Buskirk Avenue, Ste 125  
Pleasant Hill, CA 94523

Diablo Valley Child Neurology  
400 Taylor Blvd, Ste 306  
Pleasant Hill, CA 94523

## Pleasanton | **EB**

Stanford Medicine Children's Health  
Orthopedics and Sports  
Medicine – Pleasanton  
5000 Pleasanton Ave, Ste 200  
Pleasanton, CA 94566

## San Francisco | **SFNB**

Stanford Medicine Children's Health  
Specialty Services – San Francisco  
1100 Van Ness Ave, 7th Floor  
San Francisco, CA 94109

## Sunnyvale | **SBP**

Stanford Medicine Children's Health  
Specialty Services – Sunnyvale  
1195 W Fremont Ave  
Sunnyvale, CA 94087

# Network Locations

**SBP** | South Bay/Peninsula   **SFNB** | San Francisco/North Bay   **EB** | East Bay   **CC** | Central Coast   **CV** | Central Valley

## Salinas | **CC**

Pediatric Cardiology Associates –  
Salinas  
258 San Jose St, Ste A  
Salinas, CA 93901

## Santa Rosa | **SFNB**

SF/North Bay Pediatric Cardiology  
Practice  
990 Sonoma Ave, Ste 9  
Santa Rosa, CA 95404

## Walnut Creek | **EB**

Stanford Medicine Children's Health  
Specialty Services – Walnut Creek  
106 La Casa Via  
Walnut Creek, CA 94598

---

## Perinatal Diagnostic Centers

## Fremont | **EB**

Perinatal Diagnostic Center – Fremont  
2147 Mowry Ave  
Fremont, CA 94538

## Modesto | **CV**

Perinatal Diagnostic Center – Modesto  
200 E Granger Ave  
Modesto, CA 95350

## Mountain View | **SBP**

Perinatal Diagnostic Center –  
Mountain View  
2495 Hospital Dr, Ste 550  
Mountain View, CA 94040

## Palo Alto | **SBP**

Perinatal Diagnostic Center – Palo Alto  
725 Welch Rd, 3rd Floor  
Palo Alto, CA 94304

## Redwood City | **SBP**

Perinatal Diagnostic Center –  
Redwood City  
2900 Whipple Ave  
Redwood City, CA 94062

## Salinas | **CC**

Perinatal Diagnostic Center – Salinas  
212 San Jose St  
Salinas, CA 93901

## Santa Cruz | **CC**

Perinatal Diagnostic Center –  
Santa Cruz  
1685 Commercial Way, Ste A  
Santa Cruz, CA 95065

---

## Women's Care and Obstetric Locations

## Mountain View | **SBP**

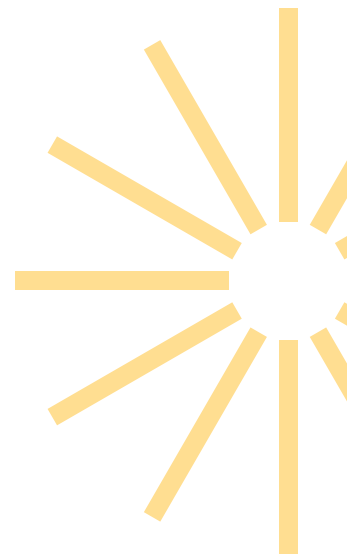
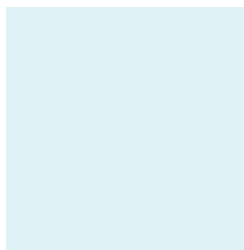
Altos Oaks Medical Group  
2495 Hospital Dr, Ste 625  
Mountain View, CA 94040

## Palo Alto | **SBP**

Women's Health – Palo Alto  
211 Quarry Rd, Ste 107  
Palo Alto, CA 94304

## Redwood City | **SBP**

Women's Care Medical Group  
2900 Whipple Ave, Ste 135  
Redwood City, CA 94062



# MD Portal

**What is the Stanford Medicine Children's Health MD Portal?** The MD Portal gives community physicians online, password protected access to the same electronic medical record that Stanford Medicine Children's Health provider and medical staff use.

**Who can get an account?** Providers and support staff.

**What can you do in the portal?** Providers and support staff can submit and track the status of referrals.

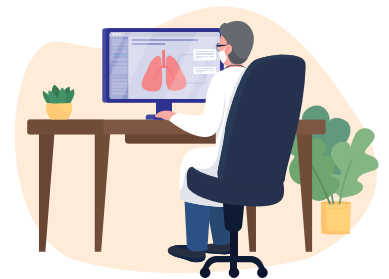
## With the MD Portal you can:



Get access to the full patient chart.



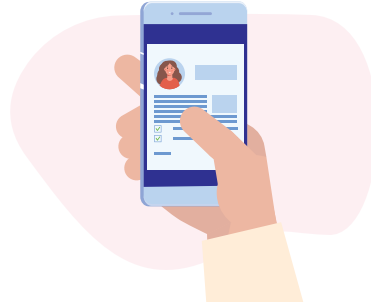
Make and track status of ambulatory referrals.



View radiology procedures (imaging).

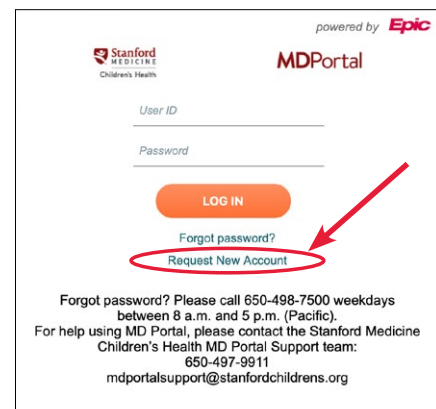


Securely communicate with the care team.



View patient updates in real-time.

To sign up for the MD Portal, visit: [mdportal.stanfordchildrens.org](https://mdportal.stanfordchildrens.org)  
Click on **Request New Account** to sign up.



powered by **Epic**

Stanford MEDICINE Children's Health

**MDPortal**

User ID \_\_\_\_\_

Password \_\_\_\_\_

**LOG IN**

Forgot password?  
**Request New Account**

Forgot password? Please call 650-498-7500 weekdays between 8 a.m. and 5 p.m. (Pacific).  
For help using MD Portal, please contact the Stanford Medicine Children's Health MD Portal Support team:  
650-497-9911  
[mdportalsupport@stanfordchildrens.org](mailto:mdportalsupport@stanfordchildrens.org)