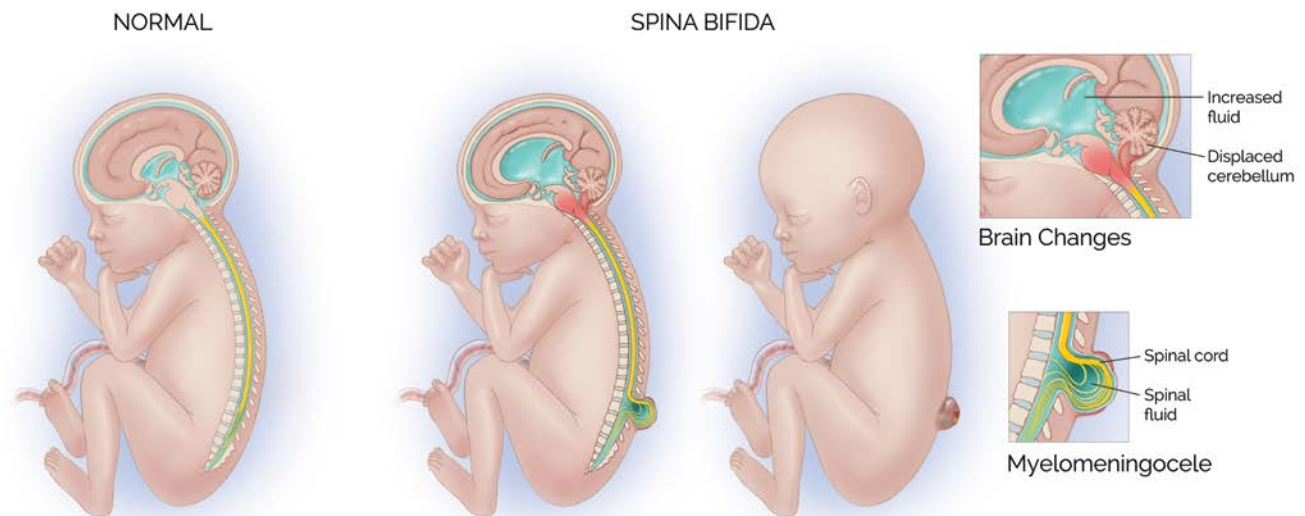




## Fetal and Pregnancy Health Program

The Fetal and Pregnancy Health Program at Stanford Children's Health provides multidisciplinary evaluation and consultation for fetal spina bifida with maternal-fetal medicine, pediatric radiology, neonatology, perinatal genetics, pediatric neurosurgery and pediatric surgery specialists. We are the only program in California to offer multidisciplinary in-utero fetoscopic neural tube defect repair under an IRB protocol with FDA oversight, and we also offer an ongoing multispecialty surgical simulation program.

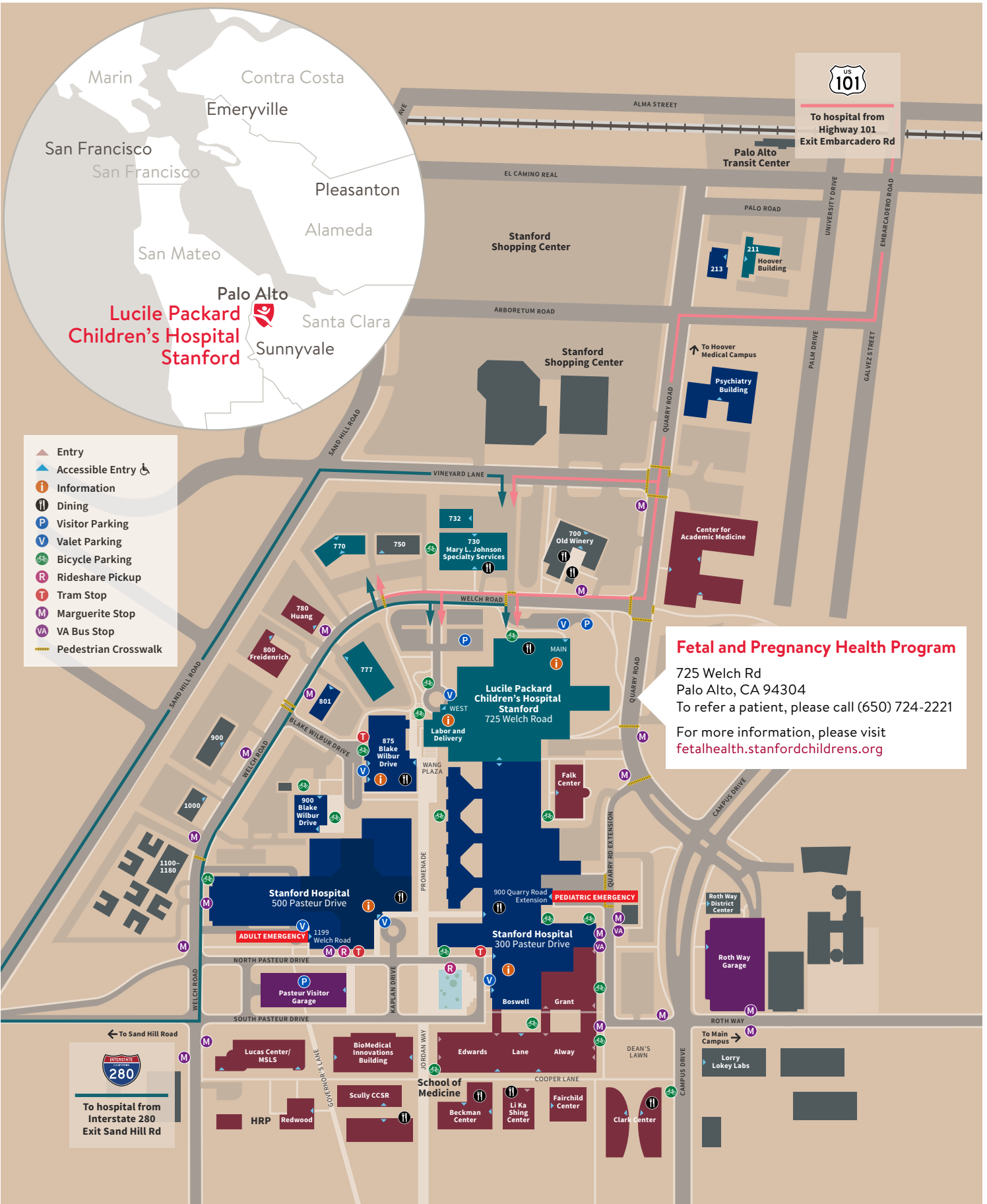
<p><b>Benefits of in-utero repair</b></p>	<ul style="list-style-type: none"> <li>• Decreased need for postnatal ventriculoperitoneal shunt</li> <li>• Improved lower motor function</li> </ul>	
<p><b>Potential benefits of fetoscopic repair over open repair</b></p>	<ul style="list-style-type: none"> <li>• 2-3 small uterine ports versus hysterotomy</li> <li>• Potential for vaginal trial of labor</li> <li>• Potential for longer gestation</li> </ul>	
<p><b>Criteria for fetoscopic in-utero repair (MOMS study criteria)</b></p>	<ul style="list-style-type: none"> <li>• Isolated spinal lesion starting at or above S1</li> <li>• Chiari II malformation (cerebellar hernia into the foramen magnum)</li> <li>• Surgery must be performed before 25 6/7 weeks</li> </ul>	<ul style="list-style-type: none"> <li>• Normal karyotype or microarray testing</li> <li>• Maternal BMI &lt;35</li> <li>• No contraindications to in-utero surgery</li> </ul>



Post-surgery pregnancy management and delivery occurs at Lucile Packard Children's Hospital Stanford, with ongoing pediatric follow-up at a designated multidisciplinary spina bifida clinic.

**To refer a patient, please call (650) 724-2221.**

Adzick, NS, et al. A randomized trial of prenatal versus postnatal repair of myelomeningocele. *N Engl J Med.* 2011;364(11):993-1004  
 Belfort MA, et al. Fetoscopic open neural tube defect repair: Development and refinement of a two-port, carbon dioxide insufflation technique. *Obstet Gynecol* 2017; 129(4):734-743.



Lucile Packard  
Children's Hospital  
Stanford

- ▲ Entry
- ▲ Accessible Entry ♿
- i Information
- 🍴 Dining
- P Visitor Parking
- V Valet Parking
- 🚲 Bicycle Parking
- R Rideshare Pickup
- T Tram Stop
- M Marguerite Stop
- VA VA Bus Stop
- Pedestrian Crosswalk

**Fetal and Pregnancy Health Program**

725 Welch Rd  
Palo Alto, CA 94304  
To refer a patient, please call (650) 724-2221  
For more information, please visit [fetalhealth.stanfordchildrens.org](http://fetalhealth.stanfordchildrens.org)